

ISSUANCE SCHEDULE

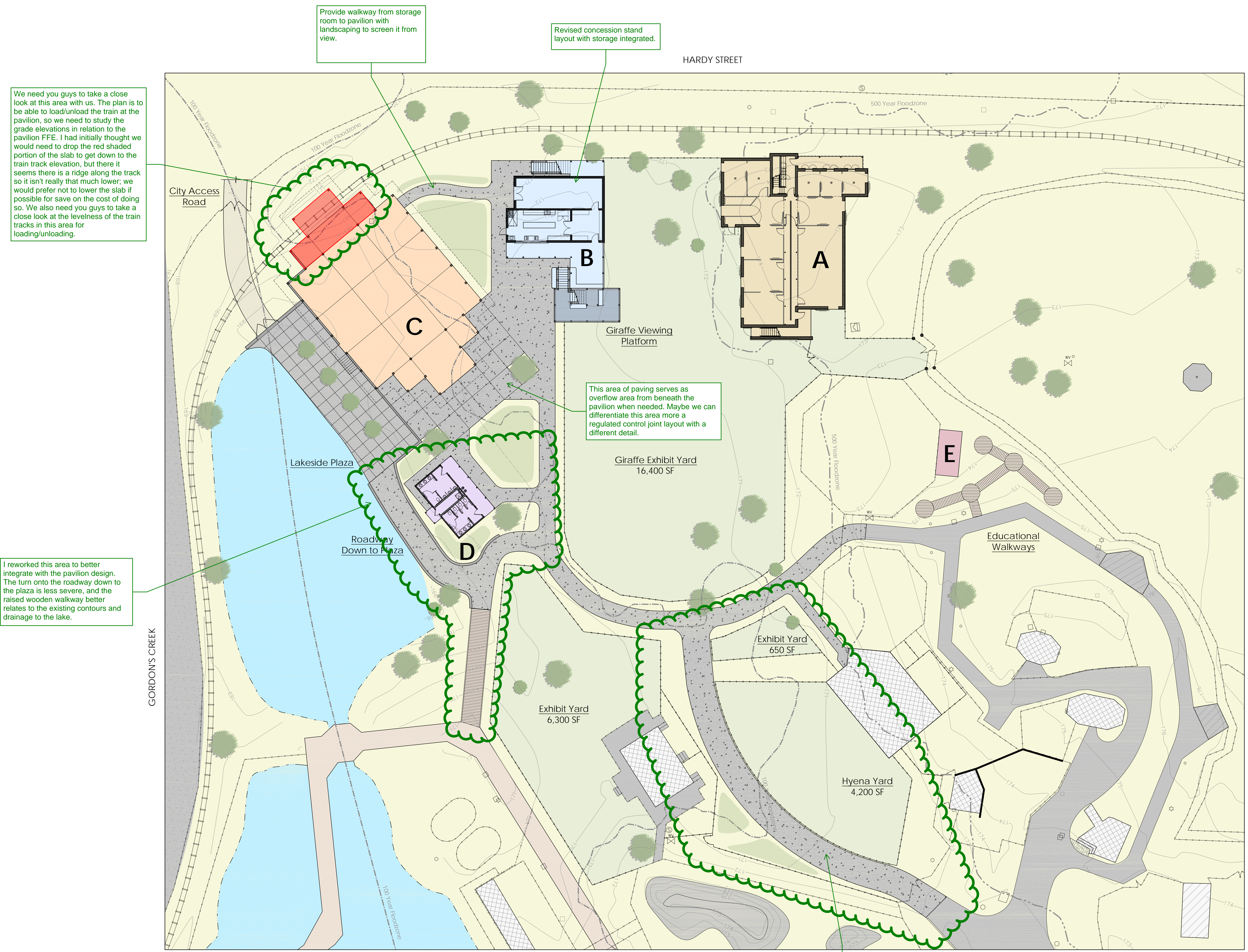
Date	Description
2018.02.05	DD Submittal
2018.xx.xx	Bid Documents

Drawn By: CP, RB, AS  
Checked By: LA, CP

PN #17-003  
**DESIGN DEVELOPMENT**

NOT FOR CONSTRUCTION

**A0.1**  
MASTER PLAN



We need you guys to take a close look at this area with us. The plan is to be able to load/unload the train at the pavilion, so we need to study the grade elevations in relation to the pavilion FFE. I had initially thought we would need to drop the red shaded portion of the slab to get down to the train track elevation, but there it seems there is a ridge along the track so it isn't really that much lower; we would prefer not to lower the slab if possible for save on the cost of doing so. We also need you guys to take a close look at the levelness of the train tracks in this area for loading/unloading.

Provide walkway from storage room to pavilion with landscaping to screen it from view.

Revised concession stand layout with storage integrated.

This area of paving serves as overflow area from beneath the pavilion when needed. Maybe we can differentiate this area more a regulated control joint layout with a different detail.

I reworked this area to better integrate with the pavilion design. The turn onto the roadway down to the plaza is less severe, and the raised wooden walkway better relates to the existing contours and drainage to the lake.

New layout for this area provided to us by the zoo.

**Legend**

- NEW CONCRETE PAVED WALKWAYS
- EXISTING CONCRETE PAVED WALKWAYS
- NEW WOODEN WALKWAYS
- EXISTING WOODEN WALKWAYS
- EXISTING BUILDING

- New Building Legend**
- A Giraffe Barn
  - B Concession Stand and Viewing Platform
  - C Pavilion
  - D Restrooms (Additive Alternate #1)
  - E Debrazza Holding (Additive Alternate #2)